



No Normal Here, Oil on canvas, 30 x 24" by Maria Morales

## *FIRST PLACE AWARD*

*Juror's Statement:*

*You can tell by the intensity of each face that there is lots of uneasy dialog taking place. The expressions on their faces leaves little to question.*



Funding is made possible in part by the New Jersey State Council on the Arts/Department of State, a Partner Agency of the National Endowment for the Arts through a grant to the Burlington County Board of County Commissioners.





The Sum of Our Experiences 2, Acrylic/Wood, 14 x 11" by Robyn Trimboli-Russo

## Second Place Award

*Juror's Statement:*

*Very nice subject. That stare! It stops me and makes me want to explore the story behind it. Very well executed.*

---



Fisherman's Face, Acrylic/Wood/Mosaic border, 12 x 9" by Wendy S. Abramowitz

## Third Place Award

*Juror's Statement:*

*Outstanding!!!! Great piece! Very nice palette. I can see him right in front of me. Maybe on a dock having a conversation. Maybe on a boat.*

---



Funding is made possible in part by the New Jersey State Council on the Arts/Department of State, a Partner Agency of the National Endowment for the Arts through a grant to the Burlington County Board of County Commissioners.





Cat Cuddlers, Acrylic on Wood, 9 x 12" by Wendy Abramowitz



Bob With Hat, Oil on canvas, 12 x 16" by Larry Chestnut

# HONORABLE MENTION AWARDS



Dan, Oil, 14 x 11" by Carol Hess-Plimpton



Suit of Armor, Pencil on paper, 10.75 x 8.75" by Doreen Korejko



The Sum of Our Experiences, Acrylic/Wood, 14 x 11" by Robyn Trimboli-Russo



Funding is made possible in part by the New Jersey State Council on the Arts/Department of State, a Partner Agency of the National Endowment for the Arts through a grant to the Burlington County Board of County Commissioners.





# 2021 Just Faces Juried Exhibition Online

People, Pets & Other Creatures  
*all media*  
May 14 ~ June 10, 2021

**A big thank you to our juror!**

## **Sydnei Smithjordan**

Sydnei Smithjordan is a freelance artist/illustrator. She has had over twenty-five years in various fields of art.

Beginning as a desktop publisher, she moved on to gain attention in the art market as a medical illustrator.

Sydnei has chosen to assert the majority of her attention to fine art and illustration since 1995. She has worked for both commercial and private venues nationally and internationally.

Educated in fine art at College of Design, Art and Architecture at Santa Monica College under the mentorship of Ronn Davis; she also studied illustration at Rhode Island School of Design.

Her works have been collected by such names as Park Overall, Whoopi Goldberg, Patti La Belle, Forrest Whitaker, Denzel Washington, Damien Escobar and Sylvester Stallone.

---

**Thank you to all who submitted  
their wonderful work for this exhibit!**

---

**Congratulations to everyone  
whose work was accepted and  
especially to the Award recipients!**

---



Funding is made possible in part by the New Jersey State Council on the Arts/Department of State, a Partner Agency of the National Endowment for the Arts through a grant to the Burlington County Board of **County Commissioners**.



# 2021 Just Faces Juried Exhibition Online

People, Pets & Other Creatures  
*all media*  
 May 14 ~ June 10, 2021



A Flower in her Hair, Oil on board (unframed), 12 x 9" by Doris Peltzman



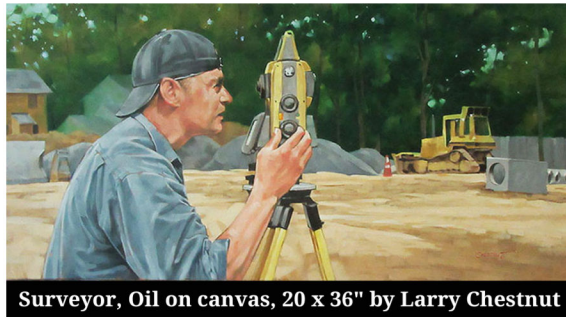
They are ALL our children , Oil on canvas, 24 x 36" by Maria Morales



Roots, Oil on canvas, 36 x 24" by Franklin Silva



Stephanie, Oil, 20 x 16 " by Carol Hess-Plimpton



Surveyor, Oil on canvas, 20 x 36" by Larry Chestnut



Snowflakes On My Nose, Photograph, 11 x 14" by Amy Bash



Kiss, Pencil on watercolor paper, 11 x 14" by Amy Bash



Sarah, Oil on canvas, 36 x 36" by Dino Sistilli



The Archer, Oil on canvas, 20 x 36" by Larry Chestnut



Heroes & Zeroes, Oil on canvas, 21 x 26" by Maria Morales



Funding is made possible in part by the New Jersey State Council on the Arts/Department of State, a Partner Agency of the National Endowment for the Arts through a grant to the Burlington County Board of County Commissioners.



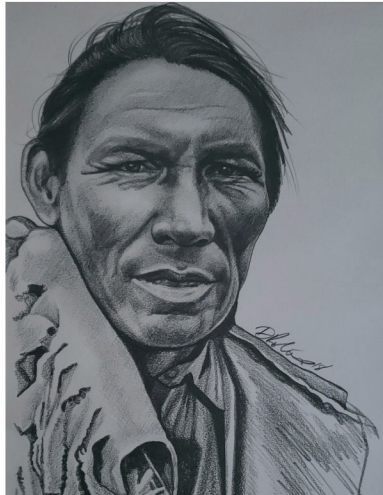
# 2021 Just Faces Juried Exhibition Online

## People, Pets & Other Creatures

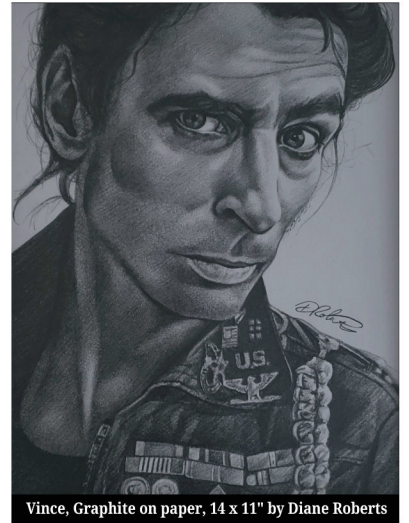
all media  
 May 14 ~ June 10, 2021



Erik, Oil on canvasboard, 20 x 16" by Dino Sistilli



Cree Man, Graphite on paper, 14 x 11" by Diane Roberts



Vince, Graphite on paper, 14 x 11" by Diane Roberts



Naomi, Oil on panel, 5 x 5" by Colleen Hammond



Grace, Oil on panel, 5 x 5" by Colleen Hammond



Becca, Oil on panel, 5 x 5" by Colleen Hammond



White Tailed Deer (unframed), Photograph digitally painted, 8.5 x 6" by Pat Ashley



Sophie (unframed), Photograph, 8.5 x 10" by Pat Ashley



Kurt, Graphite on paper, 11 x 14" by Diane Roberts



Funding is made possible in part by the New Jersey State Council on the Arts/Department of State, a Partner Agency of the National Endowment for the Arts through a grant to the Burlington County Board of County Commissioners.



# 2021 Just Faces Juried Exhibition Online

People, Pets & Other Creatures  
*all media*  
 May 14 ~ June 10, 2021



Jill, Pastel on Carson MiTienes (unframed), 11 x 8.5" by Susan Barnes



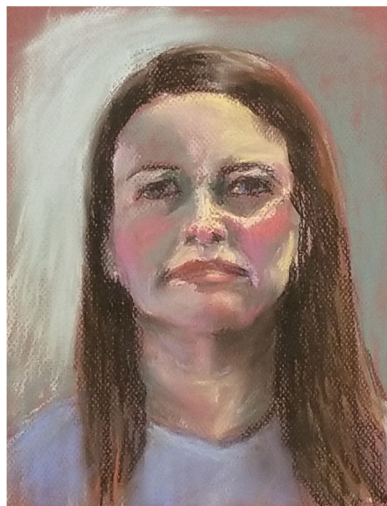
Crazy Lily (unframed), Photograph, 6 x 11" by Pat Ashley



Innocence, Oil on canvas, 14 x 11" by Diana Gawlinski



After a Swim in the Amazon Indigenous lad, Photograph (unframed), 14 x 11" by Robert Bolla



The Model, Pastel on Carson MiTienes (unframed), 11 x 8.5" by Susan Barnes



A Girl with Her American Girl Doll, Oil on canvas, 11 x 14" by Diana Gawlinski



Catirude, Oil on canvas, 12 x 9" by Diana Gawlinski



We Dress the Same, Photograph (unframed), 12 x 12" by Robert Bolla



The Shaman Indigenous Amazonian, Photograph (unframed), 19 x 13" by Robert Bolla



Funding is made possible in part by the New Jersey State Council on the Arts/Department of State, a Partner Agency of the National Endowment for the Arts through a grant to the Burlington County Board of County Commissioners.



# 2021 Just Faces Juried Exhibition Online

## People, Pets & Other Creatures

all media  
 May 14 ~ June 10, 2021



Four (unframed), Colored pencil/Conte crayon, 10 x 9" by Jay Howard



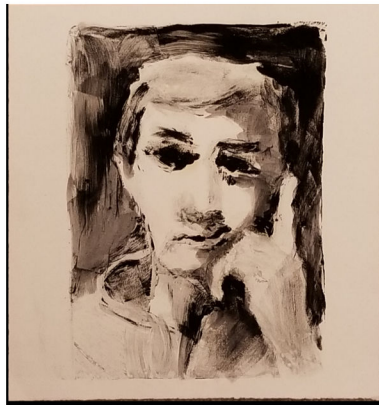
Singing Mummer. Photograph, 14 x 11" by Liz Wuilerman



Unmasked, Paper/Chalk/Photograph on paper, 9 x 7" by Art Smith



Lie, Liddy, Lie (unframed), Oil on canvas, oval 10 x 16" by Jay Howard



Really, Monotype on BFK Rives (unframed), 8 x 6" by Susan Barnes



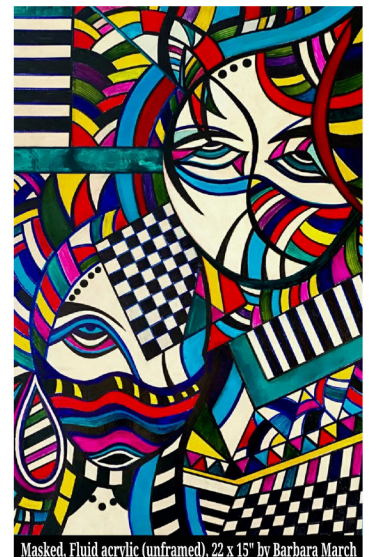
We Are Watchers, Both of Us, Acrylic/Prismacolor/Pastel on canvas, 36 x 48" by Art Smith



Triple Threat, Fluid acrylic (unframed), 21 x 17" by Barbara March



Fabulous Sunglasses and Wigs, Photograph, 12 x 12" by Liz Wuilerman



Masked, Fluid acrylic (unframed), 22 x 15" by Barbara March



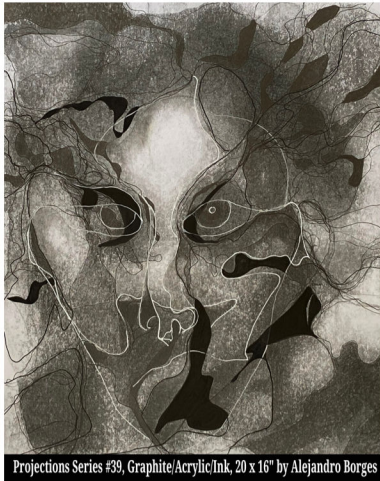
Funding is made possible in part by the New Jersey State Council on the Arts/Department of State, a Partner Agency of the National Endowment for the Arts through a grant to the Burlington County Board of County Commissioners.





# 2021 Just Faces Juried Exhibition Online

People, Pets & Other Creatures  
*all media*  
 May 14 ~ June 10, 2021



Projections Series #39, Graphite/Acrylic/Ink, 20 x 16" by Alejandro Borges



Projections Series #38, Acrylic/Ink, 20 x 8" by Alejandro Borges



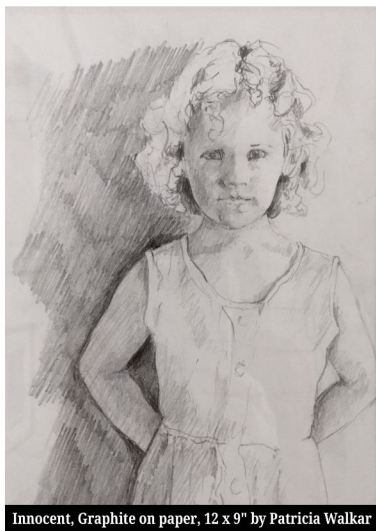
Tabby Cat, Watercolor, 3.5 x 3.5" by Sky McClain



Watching the Moon, Mixed media, 12.5 x 15" by Sky McClain



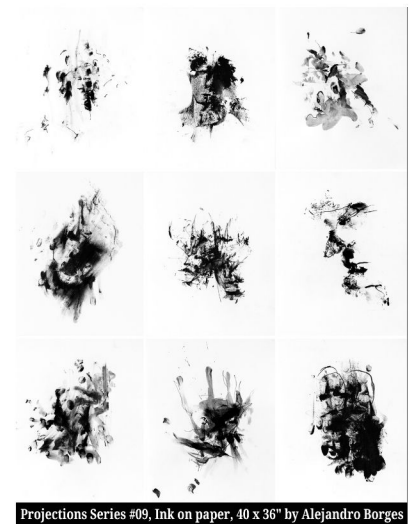
PEACE, Pastel on board, 11 x 14" by Toni Frary



Innocent, Graphite on paper, 12 x 9" by Patricia Walkar



Pup on a Snowbank, Watercolor, 5 x 5" by Sky McClain



Projections Series #09, Ink on paper, 40 x 36" by Alejandro Borges



Funding is made possible in part by the New Jersey State Council on the Arts/Department of State, a Partner Agency of the National Endowment for the Arts through a grant to the Burlington County Board of County Commissioners.



# 2021 Just Faces Juried Exhibition Online

## People, Pets & Other Creatures

*all media*  
 May 14 ~ June 10, 2021



Contemplation, Oil on canvas, 14 x 12" by Patricia Walkar



Love Have Two Faces, Ash with pigment, 21 x 18 x 5" by Roger Wing



Bella (unframed), Photograph/poster board, 12 x 12" by Richard Montemurro



Hello (unframed), Photograph/poster board, 12 x 12" by Richard Montemurro



Self-Portrait, Mahogany, 4.75 x 9.25 x 1.75" by Roger Wing



Faun, Paper birch, 5 x 5 x 5" by Roger Wing



CONFERENCE (print only), Photograph/poster board, 11 x 14" by Richard Montemurro



Wandering Albatross Chick, Photograph (unframed), 17 x 17" by J. J. L'Heureux



New Zealand Sea Lion, Photograph (unframed), 17 x 17" by J. J. L'Heureux



Imperial Shag, Photograph (unframed), 17 x 17" by J. J. L'Heureux



Funding is made possible in part by the New Jersey State Council on the Arts/Department of State, a Partner Agency of the National Endowment for the Arts through a grant to the Burlington County Board of County Commissioners.

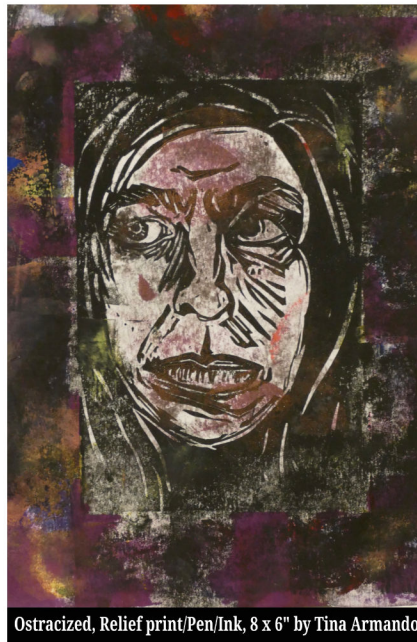


# 2021 Just Faces Juried Exhibition Online

People, Pets & Other Creatures  
*all media*  
 May 14 ~ June 10, 2021



Barkcloth Muse, Photograph, 12 x 12" by Lynne Breitfeller



Ostracized, Relief print/Pen/Ink, 8 x 6" by Tina Armando



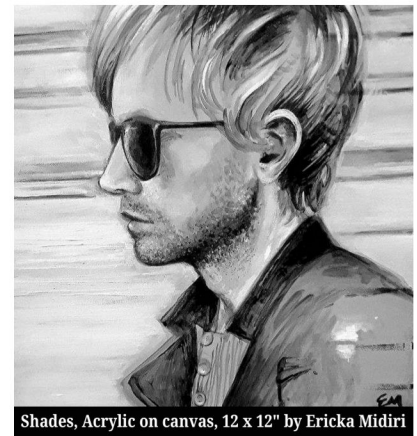
Adam and Pumpkin, Photograph, 8 x 5" by Marlene Craig



Escape, Mixed media, 16 x 20" by Ericka Midiri



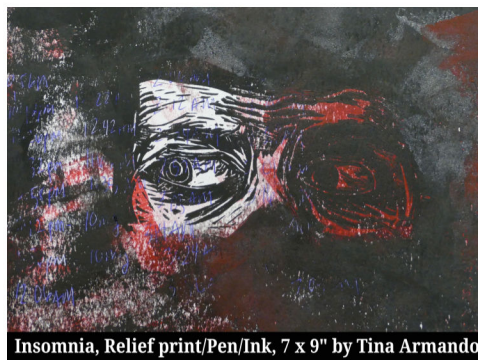
Feathered Friends, Watercolor on paper, 5 x 7" by Jeffrey Chorney



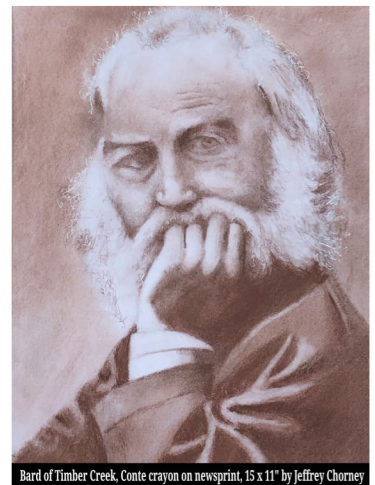
Shades, Acrylic on canvas, 12 x 12" by Ericka Midiri



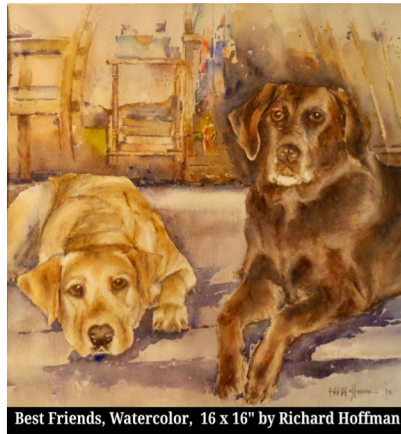
Roman Holiday, Charcoal on newsprint, 15 x 11" by Jeffrey Chorney



Insomnia, Relief print/Pen/Ink, 7 x 9" by Tina Armando



Bard of Timber Creek, Conte crayon on newsprint, 15 x 11" by Jeffrey Chorney



**The End**

---

**We hope to see you all in future exhibits!**

**Check the Exhibition page for our upcoming shows at:**

**<https://www.medfordarts.com>**

---



Funding is made possible in part by the New Jersey State Council on the Arts/Department of State, a Partner Agency of the National Endowment for the Arts through a grant to the Burlington County Board of County Commissioners.

