



presents

# 2021 Members Only Exhibition Online

Juried for Awards

*all media*

July 9 ~ August 12, 2021





**Still a Kid, Oil on Wood, 34 x 40" by Maria Morales**

# FIRST PLACE AWARD

## Juror's Statement

*Terrific composition. Tells a story. The subtlety of the background colors and textures help balance the rest of the painting. The angles of the figure's legs, bike parts and tools move you in and around the painting. This is exceptional from all aspects including the warmth and shadows on the figure.*



Funding is made possible in part by the New Jersey State Council on the Arts/Department of State, a Partner Agency of the National Endowment for the Arts through a grant to the Burlington County Board of County Commissioners.





**Batsto Village Barn, Watercolor, 10.5 x 14" by Richard Hoffman**

# SECOND PLACE AWARD

## Juror's Statement

*The artist successfully bathed the subject in warm light and captured a very welcoming feeling. There was just enough stone and wood definition to be understood. The shadows appear to be moving with the tree. Lovely painting.*



Funding is made possible in part by the New Jersey State Council on the Arts/Department of State, a Partner Agency of the National Endowment for the Arts through a grant to the Burlington County Board of County Commissioners.





**Where's Dinner, Photograph, 5 x 18" by Patricia Worley**

# THIRD PLACE AWARD

## Juror's Statement

*I see the humor in this photo. The interaction of the subjects superbly captured. Their focus and grounding in the textured sand and diffused background keep you engaged in the action. A magical photo.*



Funding is made possible in part by the New Jersey State Council on the Arts/Department of State, a Partner Agency of the National Endowment for the Arts through a grant to the Burlington County Board of County Commissioners.



# HONORABLE MENTIONS



View From My Door on a Misty Day, Water based Oil on Yupo, 8 x 8" by Doris Peltzman

## Juror's Statement

*This painting is exciting and tethers between abstraction and expressionism. The little notes of yellow and orange are well placed. The varied brush marks appear to be quickly executed giving the painting gesture.*

## Juror's Statement

*This painting is filled with color, patterns, and movement. Viewing is both fun and exhilarating. Reminiscent of Van Gogh's brushwork. The foliage on the bottom branch gets a little lost, but the wonderfully articulate branch is perfect.*



Calypso Tree, Oil on canvas, 48 x 48" by Jason Green



Funding is made possible in part by the New Jersey State Council on the Arts/Department of State, a Partner Agency of the National Endowment for the Arts through a grant to the Burlington County Board of County Commissioners.



# HONORABLE MENTIONS



**Try Me, Acrylic on Wood, 12 x 12" by Maria Morales**

## Juror's Statement

*This acrylic abstract has wonderful movement. Good composition. Lost and found edges, depth, cohesive color, and lots of varied mark making which create significant interest. All these elements work to move you around the painting and help you explore.*

## Juror's Statement

*The lines in the rock move the viewer towards the two goats. The photographer captured a lovely interaction between the mature goat and the kid.*

*The background is faded but shows the viewer additional terrain which continues the story. The focal point is almost dead center, but the composition might work a bit better if you revisit the cropping and have a less balanced composition. Still a striking photo.*



**Living on the Edge, Photograph, 12 x 18" by Jon Barnes**



Funding is made possible in part by the New Jersey State Council on the Arts/Department of State, a Partner Agency of the National Endowment for the Arts through a grant to the Burlington County Board of County Commissioners.



# HONORABLE MENTION



## Juror's Statement

*This acrylic painting captures the action of the subject. The whirling dress with pattern is terrific. The textured background does not compete with the dress, however, a lighter value background would allow the figure's expressive arms, which are wonderfully rendered, to be more prominent in the painting.*

---

A Big Thank You to Our Juror  
Madeleine Kelly!

Thank you to all who entered their beautiful work!

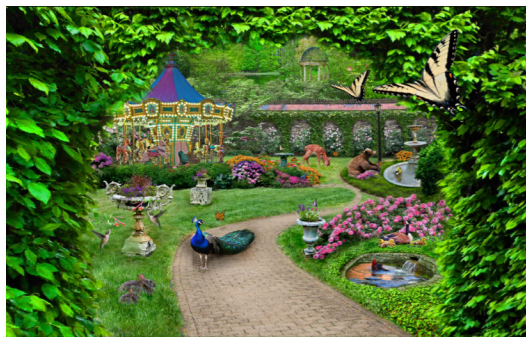
Congratulations to all the Award Recipients!



Funding is made possible in part by the New Jersey State Council on the Arts/Department of State, a Partner Agency of the National Endowment for the Arts through a grant to the Burlington County Board of County Commissioners.



2021 Members Only Exhibition Online  
*all media*  
 July 9 through August 12, 2021



Secret Garden, Photograph, 8 x 10" by Susan Spitz



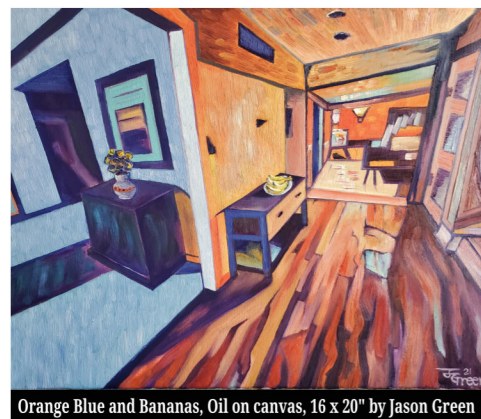
Old Times, Photograph, 12 x 18" by Jon Barnes



Roman Holiday, Watercolor, 15 x 11" by Jeffrey Chorney



Still Life, Oil on canvas, 16 x 20" by Jason Green



Orange Blue and Bananas, Oil on canvas, 16 x 20" by Jason Green



Motherly Love, Photograph, 12 x 18" by Jon Barnes



Let's Make Parr, Watercolor, 15 x 11" by Jeffrey Chorney



A Dame with Goslings, Watercolor, 11 x 15" by Jeffrey Chorney



Funding is made possible in part by the New Jersey State Council on the Arts/Department of State, a Partner Agency of the National Endowment for the Arts through a grant to the Burlington County Board of County Commissioners.





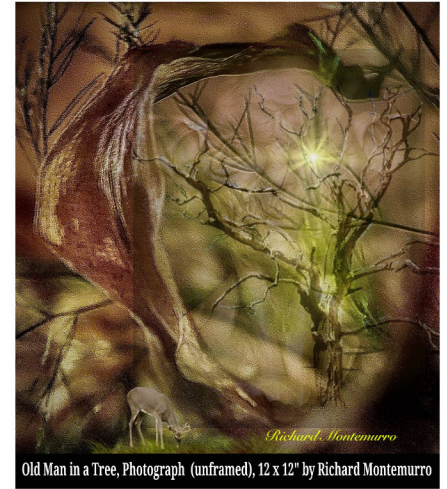
2021 Members Only Exhibition Online  
*all media*  
 July 9 through August 12, 2021



Twilight Omens, Acrylic on canvas, 18 x 24" by Ericka Midiri



Chanel No.5...of Course, Acrylic on wood, 14 x 11" by Ericka Midiri



Old Man in a Tree, Photograph (unframed), 12 x 12" by Richard Montemurro



Shadows, Photograph (unframed), 11 x 14" by Richard Montemurro



Selfie, Photograph (unframed), 14 x 11" by Richard Montemurro



Crown Jewel, Collage/Silk/Dyes, 30 x 34" by Patricia Walker



R. Hardy, Acrylic on canvas, 24 x 18" by Ericka Midiri



Celebrity, Collage/Silk/Dyes, 30 x 32" by Patricia Walker



Funding is made possible in part by the New Jersey State Council on the Arts/Department of State, a Partner Agency of the National Endowment for the Arts through a grant to the Burlington County Board of County Commissioners.



2021 Members Only Exhibition Online  
*all media*  
 July 9 through August 12, 2021



It's In There, Acrylic on Wood, 12 x 12" by Maria Morales



Still Life with Orange Flower, Oil on canvas, 10 x 8" by Judy Fusco



Layered Tulips, Photograph, 11 x 14" by Jeff Feeny



Teapot and Persimmons, Oil on canvas, 11 x 14" by Judy Fusco



Sunrise Solitude, Photograph, 14 x 11" by Jeff Feeny



Center City Cycle, Photograph, 14 x 11" by Jeff Feeny



Apples, Oil on canvas, 11 x 14" by Judy Fusco



Lillies and Hostas, Oil on canvas (unframed), 18 x 24" by Ann Krejsa Fryland



Funding is made possible in part by the New Jersey State Council on the Arts/Department of State, a Partner Agency of the National Endowment for the Arts through a grant to the Burlington County Board of County Commissioners.



# 2021 Members Only Exhibition Online

*all media*  
 July 9 through August 12, 2021



A Dog named Trevor, Colored pencil, 14 x 14" by Lydia Congiu



Faith & Hope, Pressed flower collage (unframed), 11 x 8.5" by Margaret Romano



Golden Hour, Photograph (unframed), 11 x 14" by Pat Ashley



Spring Refresh, Pressed flower collage (unframed), 11 x 8.5" by Margaret Romano



River View, Photograph (unframed), 11 x 14" by Pat Ashley



Dream Come True Day, Oil on Yupo, 26 x 20" by Doris Peltzman



Rolling Hills, Photograph (unframed), 11 x 14" by Pat Ashley



Floral Chromatica, Pressed flower collage, 12 x 12" by Margaret Romano



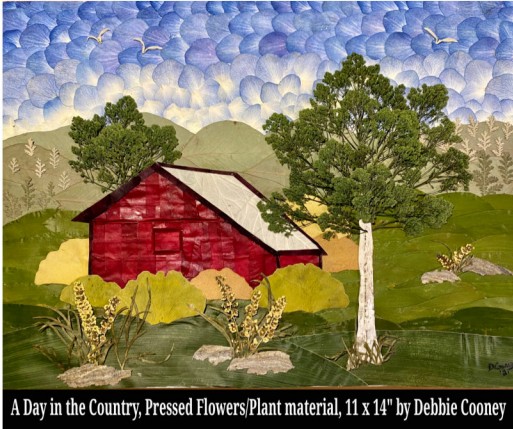
First Class, Yoga for Beginners, Watercolor/Pen/Ink, 12 x 20" by Carolyn Peterson



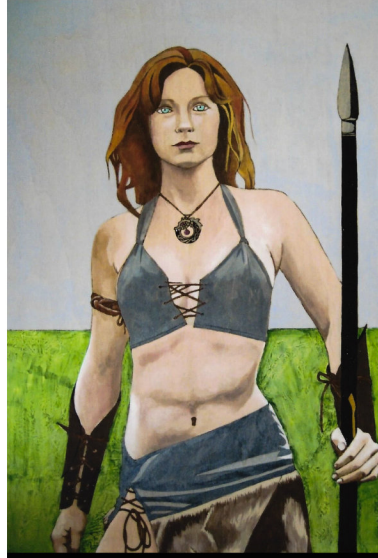
Funding is made possible in part by the New Jersey State Council on the Arts/Department of State, a Partner Agency of the National Endowment for the Arts through a grant to the Burlington County Board of County Commissioners.



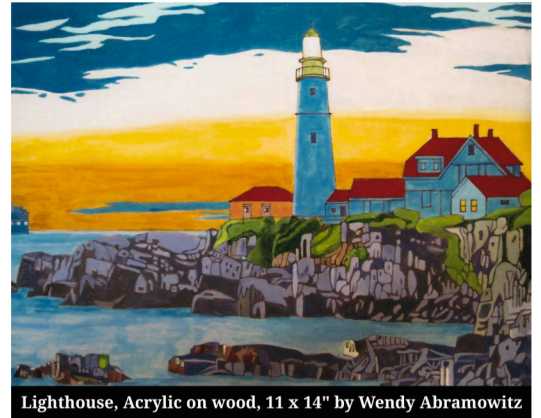
2021 Members Only Exhibition Online  
*all media*  
 July 9 through August 12, 2021



A Day in the Country, Pressed Flowers/Plant material, 11 x 14" by Debbie Cooney



Brave, Acrylic on wood, 20 x 16" by Wendy Abramowitz



Lighthouse, Acrylic on wood, 11 x 14" by Wendy Abramowitz



Kirbys Mill Bridge, Watercolor, 10 x 8" by Richard Hoffman



Within the Fence, Photograph, 8 x 10" by Patricia Worley



July 4th, Watercolor, 11 x 8" by Richard Hoffman



Country Road, Photograph, 12 x 18" by Patricia Worley



The Park in Daylight, Watercolor (unframed), 7.5 x 22" by Kara Coleman



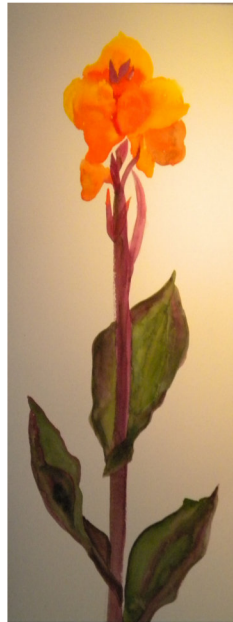
Funding is made possible in part by the New Jersey State Council on the Arts/Department of State, a Partner Agency of the National Endowment for the Arts through a grant to the Burlington County Board of County Commissioners.



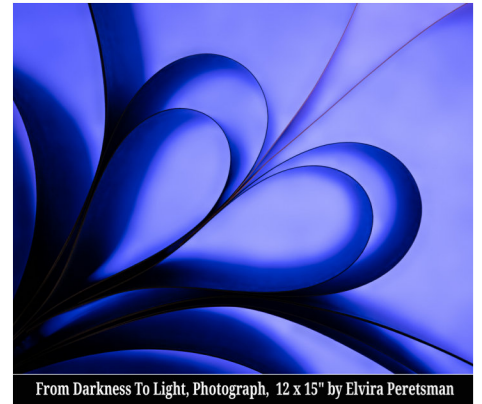
2021 Members Only Exhibition Online  
*all media*  
 July 9 through August 12, 2021



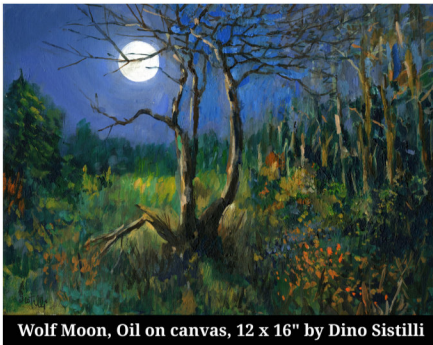
Hydrangeas, Oil, 12 x 9" by Diana Gawlinski



Tall Flower, WC, 30 x 11" by Kara Coleman



From Darkness To Light, Photograph, 12 x 15" by Elvira Peretsman



Wolf Moon, Oil on canvas, 12 x 16" by Dino Sistilli



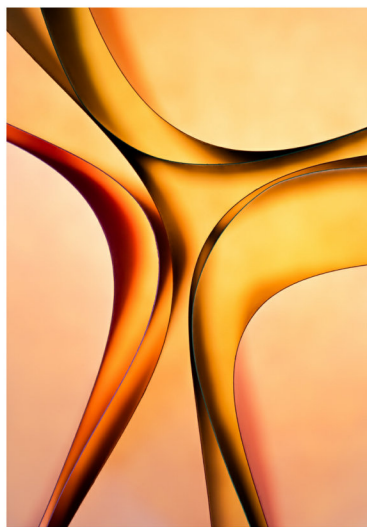
Burst of Sunshine, Photograph, 12 x 18" by Elvira Peretsman



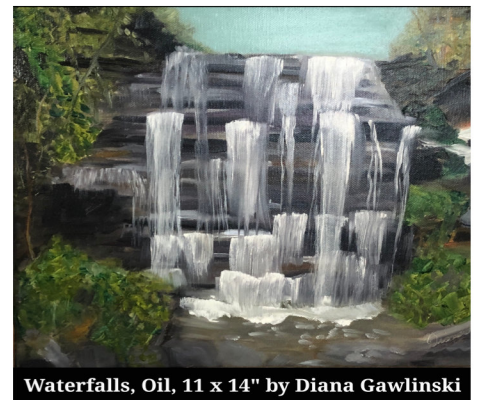
Spring Lake, Oil, 12 x 9" by Diana Gawlinski



Onward and Upward, Colored Pencil, 12 x 9" by Sara Ascalon



Graceful, Photograph, 14 x 10" by Elvira Peretsman



Waterfalls, Oil, 11 x 14" by Diana Gawlinski



Funding is made possible in part by the New Jersey State Council on the Arts/Department of State, a Partner Agency of the National Endowment for the Arts through a grant to the Burlington County Board of County Commissioners.



# 2021 Members Only Exhibition Online

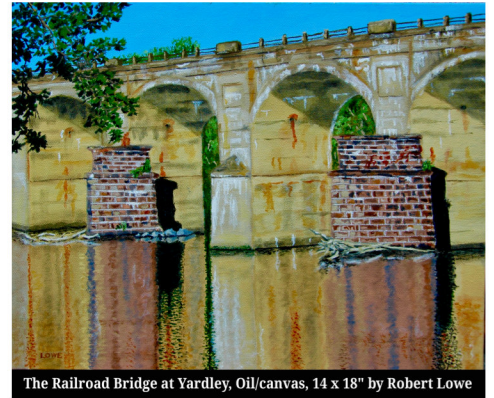
*all media*  
 July 9 through August 12, 2021



Out of Control, Digital photograph, 12 x 18" by Sara Ascalon



Phoenix Rising, Bristol board/micron pens/wc pencil, 24 x 18" by Sherry Dellaria-McGrath



The Railroad Bridge at Yardley, Oil/canvas, 14 x 18" by Robert Lowe



Swooping Barn, Micron & brush pens/paint markers, 9 x 12" by Sherry Dellaria-McGrath



Ready to Launch, Watercolor/Arches, 16 x 20" by Robert Lowe



Sundown, Bristol board/micron pens/wc pencil, 11 x 14" by Sherry Dellaria-McGrath



Colonial Road, Oil/canvas, 25 x 19" by Robert Lowe



Breaking the Silence, Digital photo composite, 12 x 18" by Sara Ascalon



Stuck on Land, Oil, 11 x 13.625" by Susan Barnes



Pump House in the Bog, Oil, 5.75 x 13.875" by Susan Barnes



Anchored Alone, Oil, 7 x 9.625" by Susan Barnes



Funding is made possible in part by the New Jersey State Council on the Arts/Department of State, a Partner Agency of the National Endowment for the Arts through a grant to the Burlington County Board of County Commissioners.

