



Morning Light, Watercolor, 18.5 x 12" by Gwynn DiPilla

## FIRST PLACE AWARD

### *Juror's Statement*

**This piece engaged me immediately. Simple by design yet complex, the artist has achieved heightened realism along with a silent dialog. The static energy of the piece left me, not only appreciating the technique but also wondering about it's story. Excellent job.**

## **About the Juror**

### **Betsy Naumchik**

Betsy studied at Rochester Institute of Technology/ School of design, The Pennsylvania Academy of Fine Art and furthered her instruction privately with figurative artist, Wade Schuman. She is a signature artist with the Pennsylvania Watercolor Society and has won numerous awards Betsy spent 20 years teaching art to home-schooled children. She now paints and teaches privately.

**A Big Thank You to Our Juror,**

**Our Sponsors**

**and to all who submitted their  
beautiful work!**

~ ~ ~

**Congratulations to all those who**

**had their work accepted**

**and**

**especially to the Award Recipients!**





2

Three Robins, Watercolor, 16 x 12" by Zaira Dzhaubaeva

## Second Place Award

### Juror's Statement

The simple, energetic technique used here shows a confidence hard to achieve. The brushwork adds to the language of the piece allowing it to be part of the whole. Well done.

### Juror's Statement

The simplicity of this piece is deceiving. Looking at it you see good use of technical skill, restraint and perspective. All three are needed to illustrate the action going on in this piece. Well done.

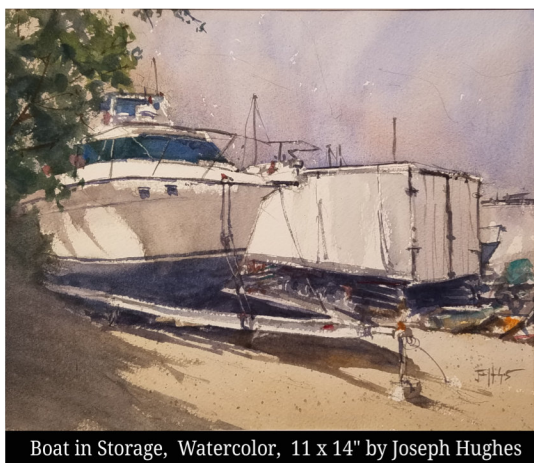


Medford Bouquet, Oil/Yupo, 7 x 7" by Doris Peltzman

## Third Place Award



## Honorable Mentions





# 2022 Works on Paper Juried Exhibition

Online & In Gallery

January 14 ~ February 10, 2022



Heading Home Together, Watercolor, 15 x 11" by Jeffrey Chorney



Dusk, Oil on canvas paper, 9 x 12" by Catherine Scannell



Sleepy Hollow Light, Watercolor, 15 x 11" by Jeffrey Chorney



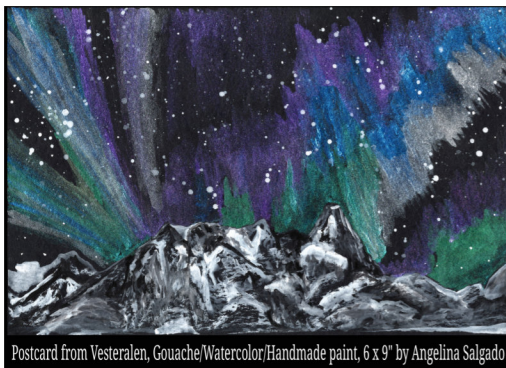
Tropical Jewel, Pressed flower collage, 12 x 12" by Margaret Romano



Countryside View, Pressed flower collage, 10 x 12" by Margaret Romano



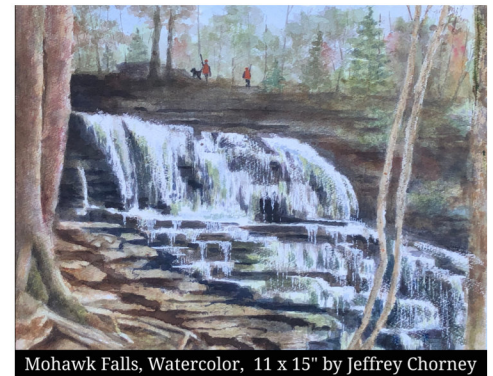
Brooklyn Bridge, Watercolor, 14 x 11" by Joseph Hughes



Postcard from Vesteralen, Gouache/Watercolor/Handmade paint, 6 x 9" by Angelina Salgado



NY City 6th Ave, Watercolor, 14 x 11" by Joseph Hughes



Mohawk Falls, Watercolor, 11 x 15" by Jeffrey Chorney



# 2022 Works on Paper Juried Exhibition

Online & In Gallery

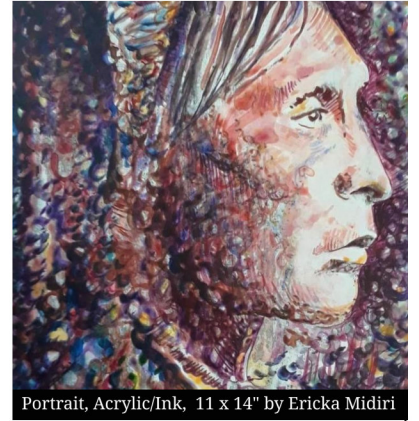
January 14 ~ February 10, 2022



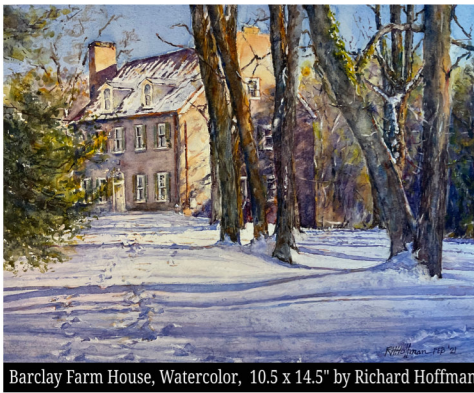
Mother's Hands, Watercolor, 19 x 24" by Ericka Midiri



Dinka, Acrylic, 16 x 11.5" by Jelani Thomas



Portrait, Acrylic/Ink, 11 x 14" by Ericka Midiri



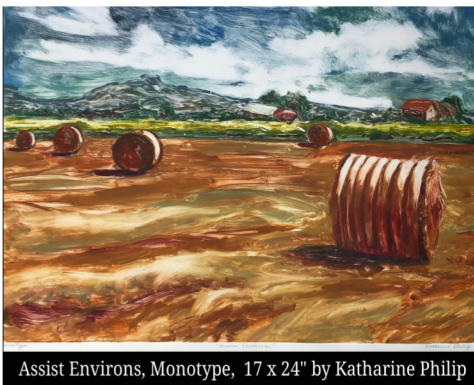
Barclay Farm House, Watercolor, 10.5 x 14.5" by Richard Hoffman



Ribbon Dance, Graphite, 14 x 11" by Carina Brandt



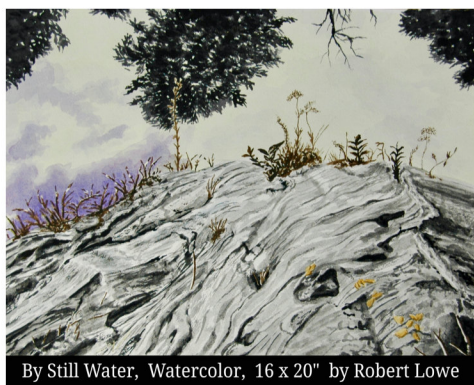
Soul Sisters, Watercolor/Ink, 13 x 15" by Carolyn Peterson



Assist Environs, Monotype, 17 x 24" by Katharine Philip



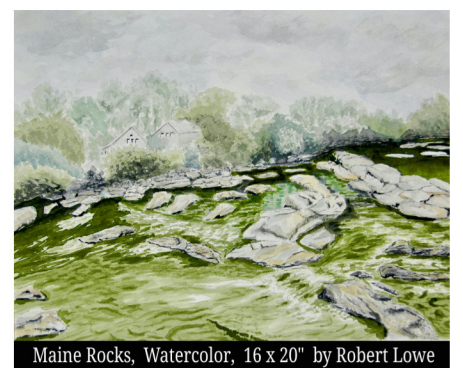
That Back, Charcoal, 18 x 24" by Carina Brandt



By Still Water, Watercolor, 16 x 20" by Robert Lowe

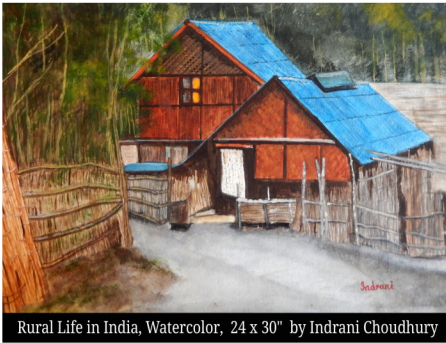


At Kirbys Mill, Watercolor, 14 x 10" by Richard Hoffman



Maine Rocks, Watercolor, 16 x 20" by Robert Lowe





Rural Life in India, Watercolor, 24 x 30" by Indrani Choudhury



Giverny, Watercolor, 28 x 22.25" by Katharine Philip



Lilac Way, Monotype/Watercolor/Pastel, 10 x 8" by Emily Gilman Beezley



#14, Collage, 11.5 x 14.5" by Katrina Plaster



Moonlight on Field, Print, 6 x 4" by Carol Hess-Plimpton



Philly Blues, Watercolor, 32.5 x 23.5" by Gwynn DiPilla



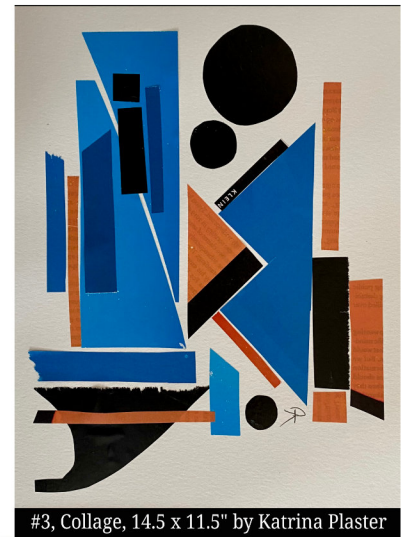
#17, Collage, 11.5 x 14.5" by Katrina Plaster



Equinoxium, Monotype, 10 x 8" by Emily Gilman Beezley



Bog Pine, Oil/Colored pencil on paper, 13 x 10" by James Rosanio



#3, Collage, 14.5 x 11.5" by Katrina Plaster



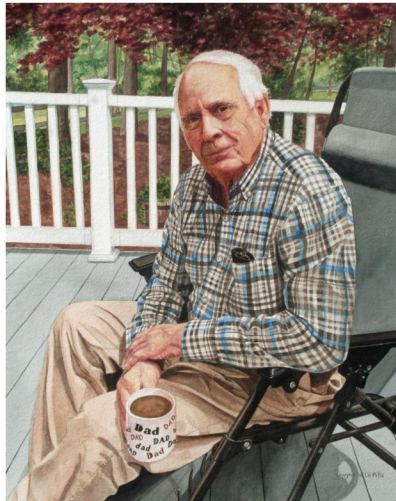
# 2022 Works on Paper Juried Exhibition

Online & In Gallery

January 14 ~ February 10, 2022



Spreading Virus Through the USA, Watercolor, 10 x 18" by Joy Hoffman



Dad, Watercolor, 18.25 x 14.5" by Gwynn DiPilla



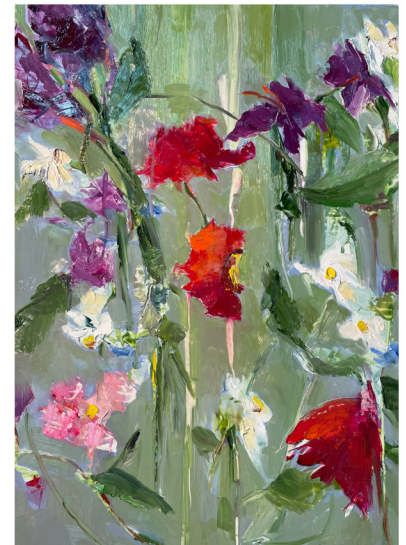
Canal and Boats, Watercolor, 7.5 x 9.5" by Joy Hoffman



VIVE LA REVOLUTION, Scratchboard, 10 x 8" by Art Smith



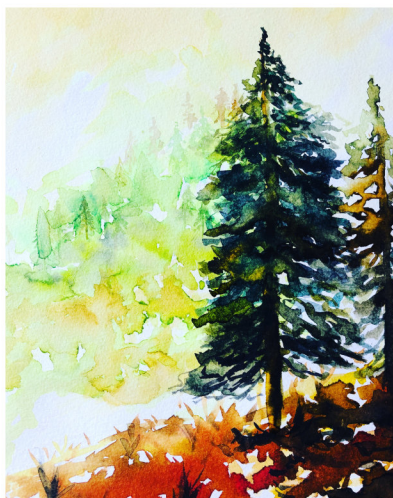
Saint Catherine Patron Saint of Artists & Lost Causes, Paper/Ink/Colored pencil, 17 x 17" by Art Smith



No Boundries, Oil/Yupo, 27 x 24" by Doris Peltzman



The Other Half, Oil/Yupo, 26 x 20" by Doris Peltzman



Hiking Mt Ripinski, Watercolor, 14 x 12" by Sharon Smith



Money Honey Disappearing, Collage, 10 x 16" by Joy Hoffman

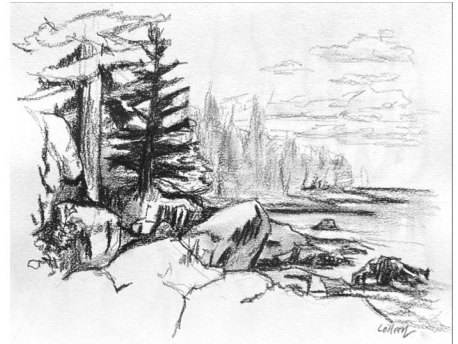




Moths, Gouache, 20 x 20" by Alexis Nason



Fleury of Flowers, Watercolor, 12 x 9" by Sharon Smith



Lake Superior, Charcoal, 6 x 9" by Colleen Cosgrove



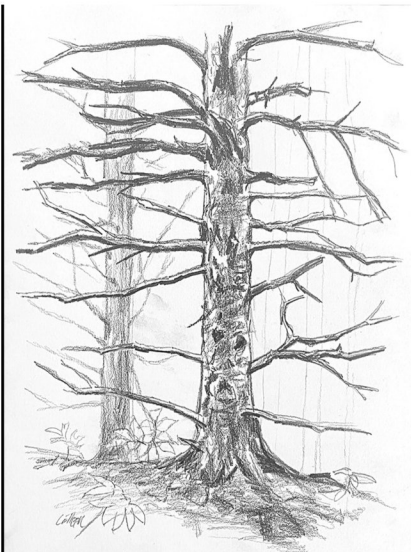
Jellyfish, Gouache, 13 x 11" by Alexis Nason



The View, Ink, 8.25 x 5" by Christopher Ahn



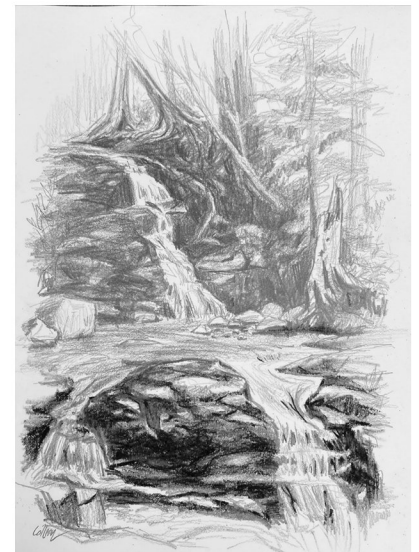
Lanternfly, Gouache, 7 x 7" by Alexis Nason



Pine Tree, Pencil, 9 x 6" by Colleen Cosgrove



Pizza Night, Markers, 22 x 30" by Tarrife Dennis



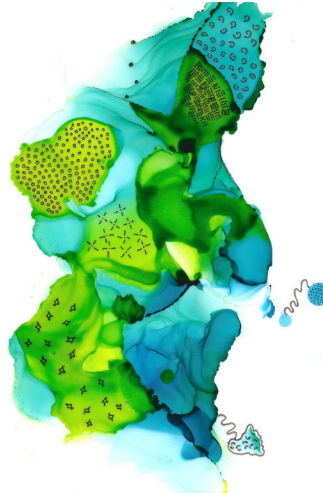
Cascade Falls, Pencil, 9 x 6" by Colleen Cosgrove





THE HUNGRY BODHISATVA

The Hungry Bodhisattva, Ink/Graphite, 7 x 10" by Lynne Rosenberg



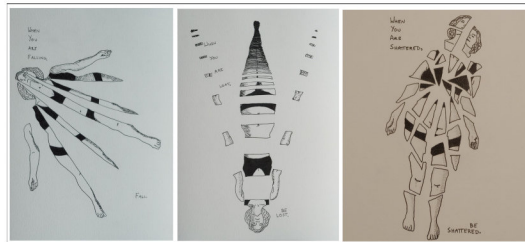
Show Me The Way Home, Alcohol Ink/Pen, 7 x 5", by Nina Yocom



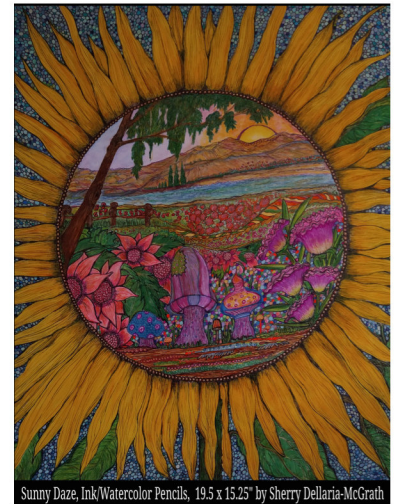
Splendor, Alcohol Ink, 4.5 x 4.5" by Nina Yocom



Countdown, Ink/Graphite, 10 x 7" by Lynne Rosenberg



Triptych, Ink/Graphite, 21 x 10" by Lynne Rosenberg



Sunny Daze, Ink/Watercolor Pencils, 19.5 x 15.25" by Sherry Dellaria-McGrath



White Lotus, Alcohol Ink, 5 x 5" by Nina Yocom



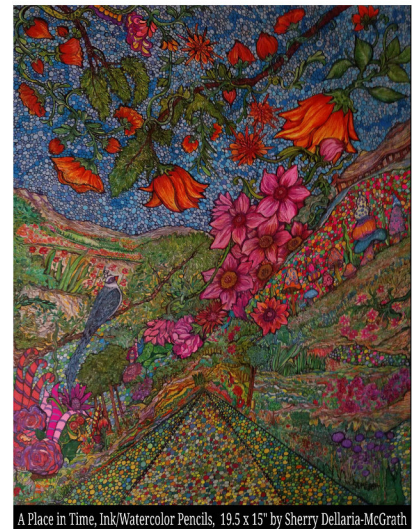
November, Acrylic, 11 x 17" by Sevgi Wallack



Moonlit Murder, Ink/Watercolor pencils, 7.5 x 9.5" by Sherry Dellaria-McGrath



Soft, Charcoal, 18 x 14" by Franklin Silva



A Place in Time, Ink/Watercolor Pencils, 19.5 x 15" by Sherry Dellaria-McGrath



# 2022 Works on Paper Juried Exhibition

Online & In Gallery

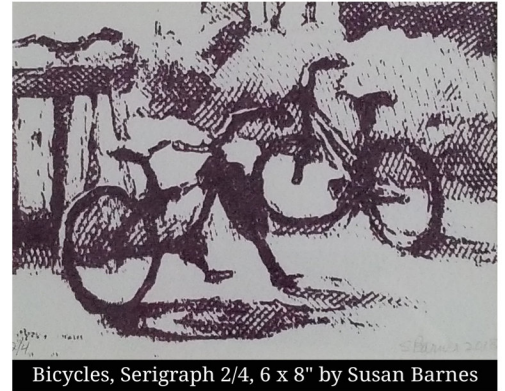
January 14 ~ February 10, 2022



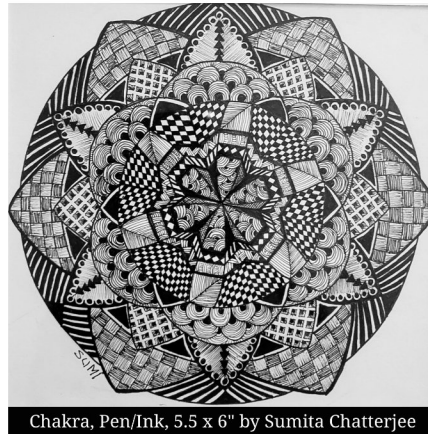
On Open Seas, Solarplate Etching, 6 x 8" by Susan Barnes



Expressive Flowers, Monotype, 10 x 8" by Susan Barnes



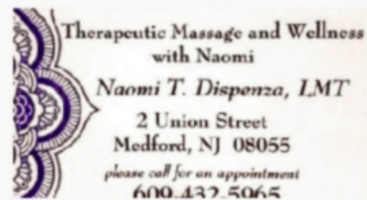
Bicycles, Serigraph 2/4, 6 x 8" by Susan Barnes



Chakra, Pen/Ink, 5.5 x 6" by Sumita Chatterjee

## Thank You to Our Sponsors!

### EXHIBITION PROGRAM SPONSOR



Medford Arts Center - 8 N. Main St. - Medford, NJ 08055 - [www.medfordarts.com](http://www.medfordarts.com)  
A non-profit under Chapter 501(c)(3) of the Internal Revenue Code.



MADE POSSIBLE BY FUNDS FROM THE BURLINGTON COUNTY BOARD OF COMMISSIONERS, DEPARTMENT OF RESOURCE CONSERVATION, DIVISION OF PARKS, A PARTNER OF THE NEW JERSEY STATE COUNCIL ON THE ARTS.

